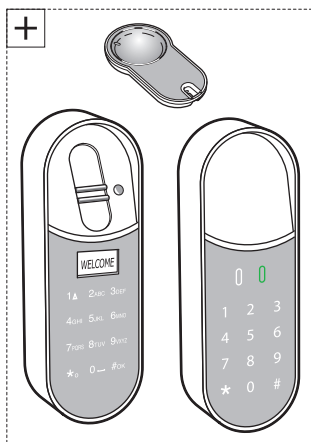
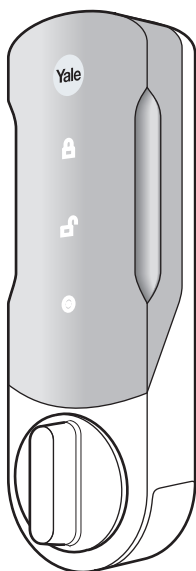




Smart Lock

Quick Guide



An ASSA ABLOY Group brand

ASSA ABLOY

The smarter way to protect your home.

Read this carefully before using ENTR S

This product is designed and manufactured for safe usage. Improper use can cause loss of property, personal injury or product malfunction.

Service must be done only by trained personnel. This could be necessary for example when the product is damaged or needs hardware upgrade. The software upgrades can be done in most of the cases with help of the Yale App. Kindly make sure you always update to the latest software when received a notification.

Disassembly or installation with other systems other than described in the product manuals is not allowed.

Brands, brand name, design, copyright, patent and other proprietary right on or within this product and manuals is the property of the manufacturer and shall not be used without written approval.

Read these instructions carefully, aswell as our Terms and our Privacy Policy and make sure that you understand them, before you start using the Device(s). Changes to the manuals can be done without prior notice.

The full text of the EU declaration of conformity is and our Terms and Conditions and Privacy Policy can be found at our website at the following Internet address: www.yale.se, www.yale.dk, www.yale.no

Hereby, ASSA AB declares that the radio equipment type Bluetooth Electronic Lock is in compliance with the Directive RED (Radio Equipment Directive) 2014/53/EU and EMC 2014/30/EU.

Find manual for extended functions at:

www.yale.se/entrs 

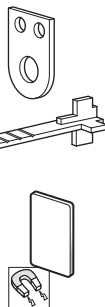
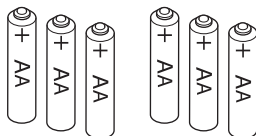
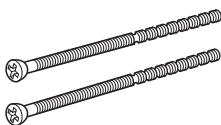
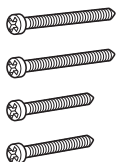
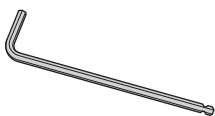
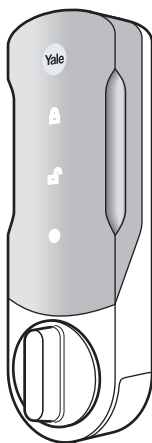
www.yale.no/entrs 

www.yale.dk/entrs 

Find instructions video at:



In the box



Manual: www.yale.se/entrs 
www.yale.no/entrs 
www.yale.dk/entrs 

Warning: Do not attempt to operate the unit until assembled on the door.

Download Application



ENTR S 

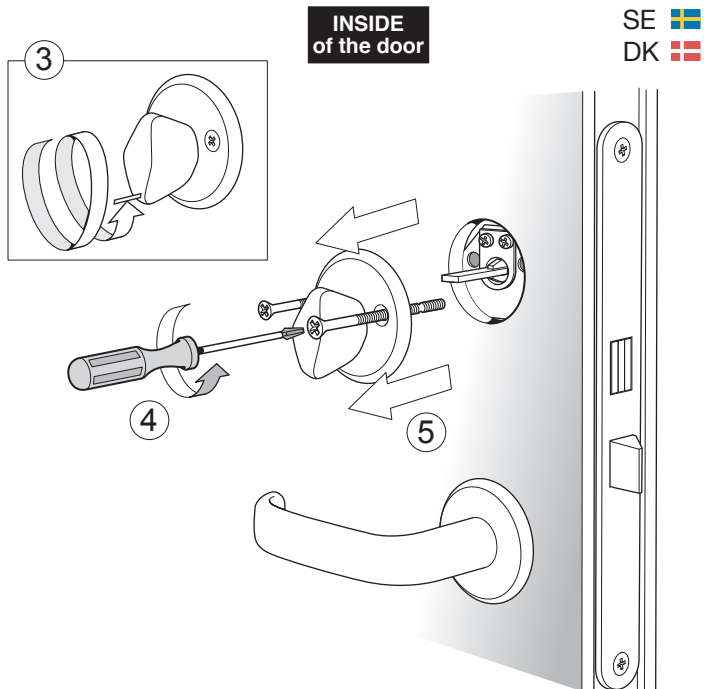
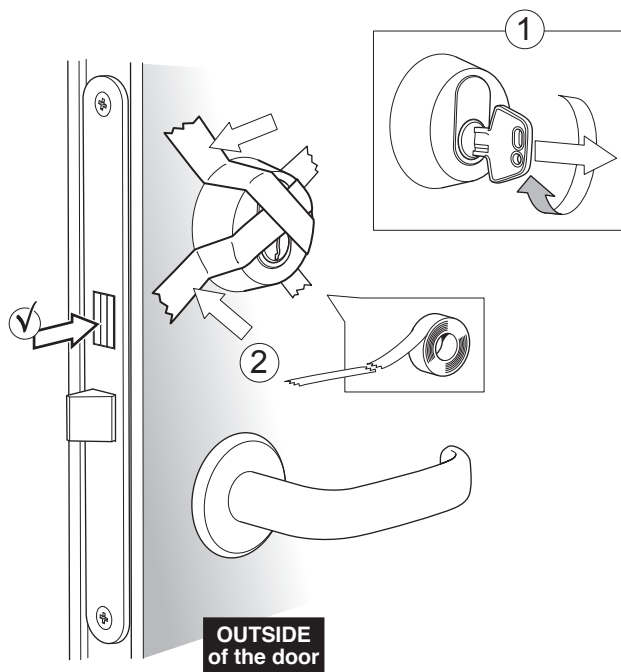
iOS



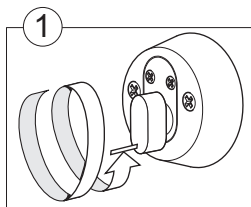
Android



Uninstall existing lock

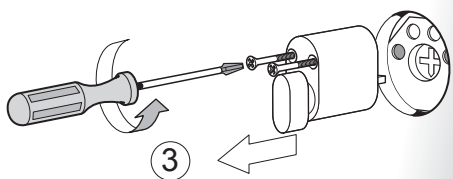
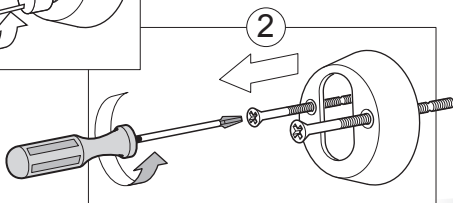


Uninstall existing lock



INSIDE
of the door

NO 



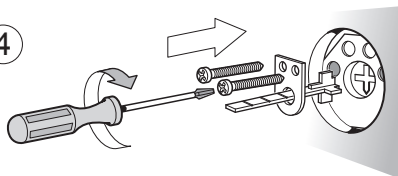
Choose
long or short



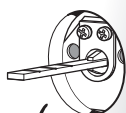
4



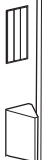
IMPORTANT!
Make sure both are
pointing down before
installation.

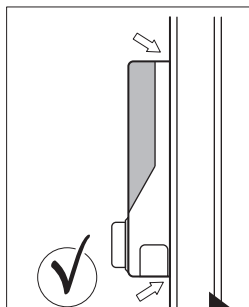
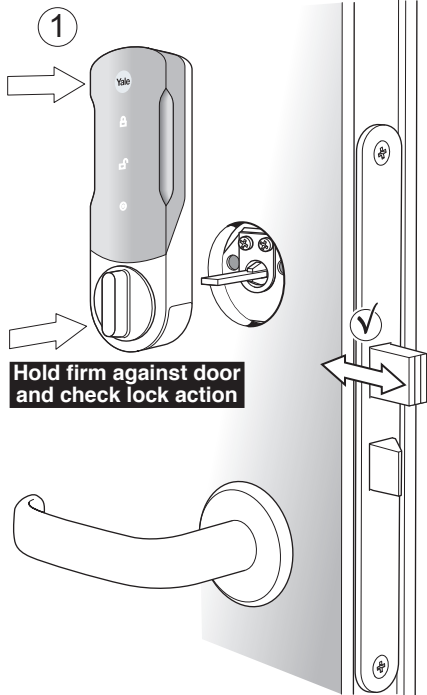


NO 

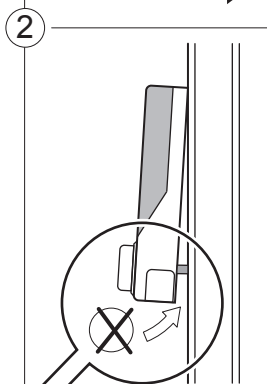


SE 
NO 
DK 



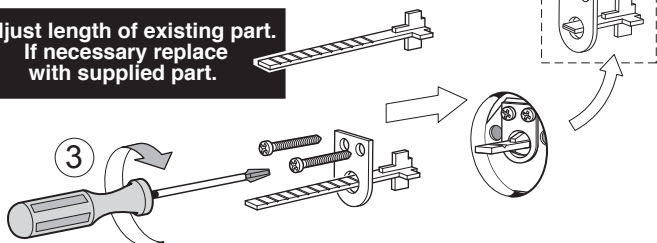


If flush
continue to next page



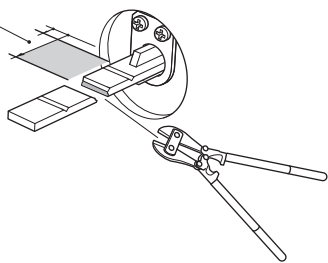
If not flush
follow instruction

Adjust length of existing part.
If necessary replace
with supplied part.

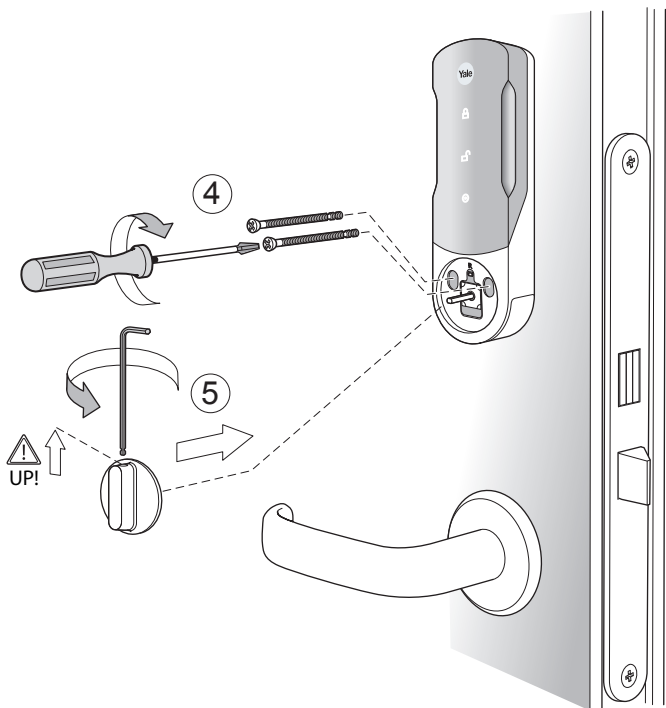
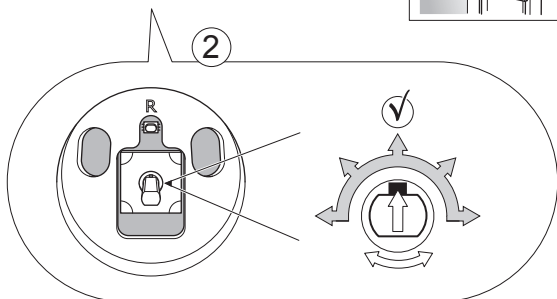
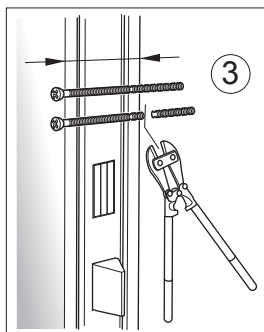
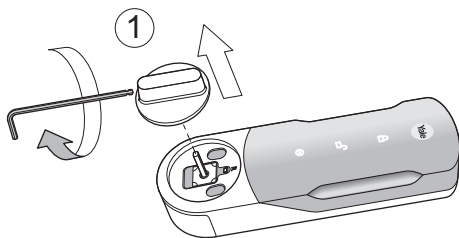


4

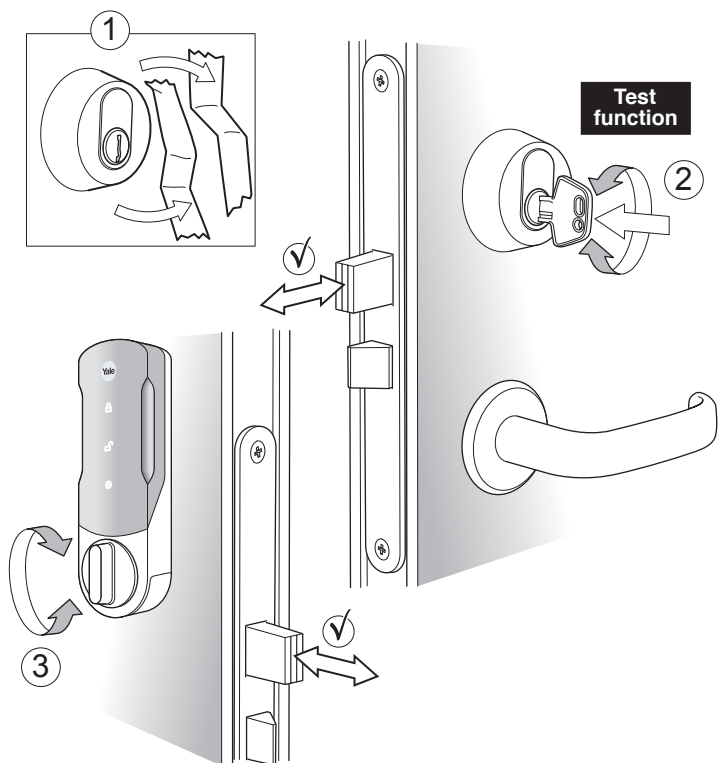
min 3 mm
max 8 mm



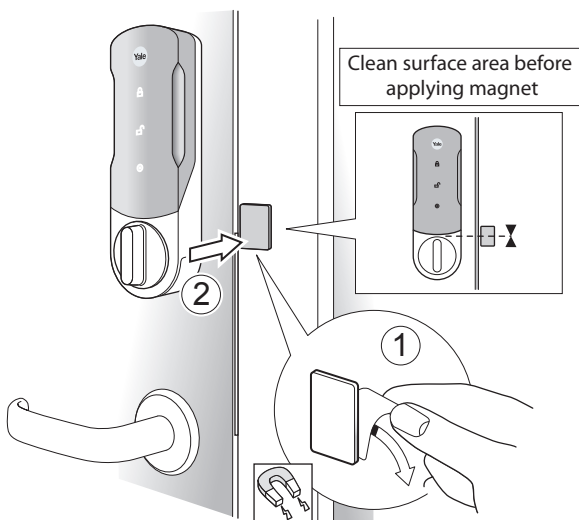
Install ENTR S

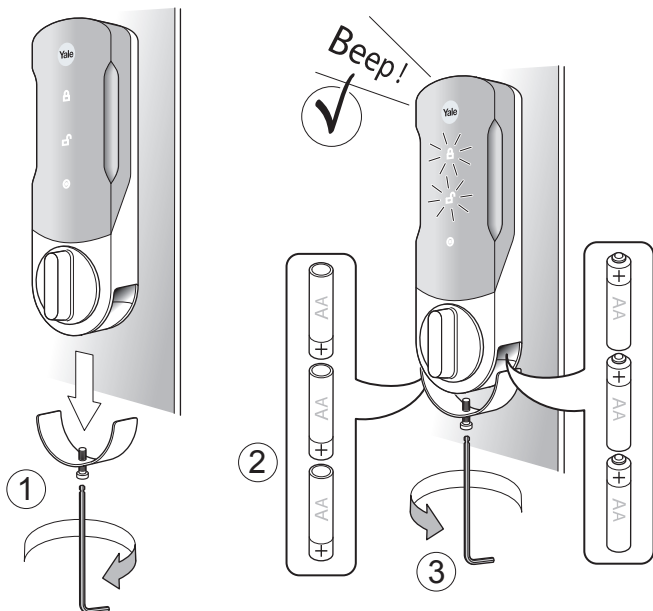


Check lock action



Adding magnet





IMPORTANT!

Download the app before inserting the batteries.
The **SETUP** of the lock **HAS TO BE STARTED WITHIN 5 minutes of inserting the batteries.**

This is for security reasons. If 5 minutes would be exceeded, a **MASTER RESET OR A SOFT RESET** is required before the **SETUP** of the lock can be initiated again.

MASTER RESET only if needed

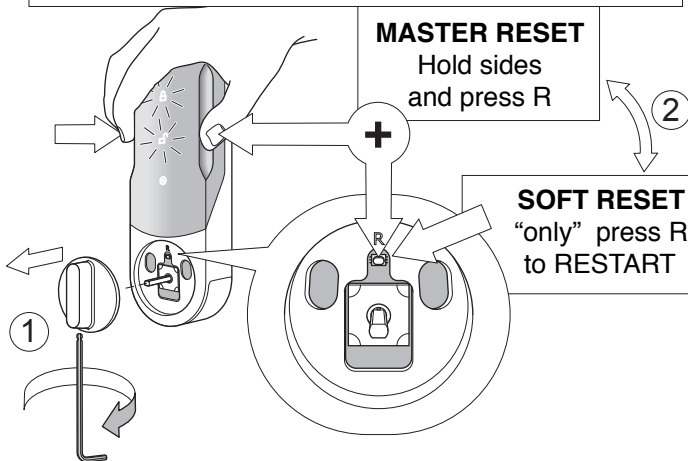


NOTE! The MASTER RESET deletes all the credentials

MASTER RESET

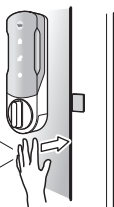
Hold sides
and press R

SOFT RESET
"only" press R
to RESTART

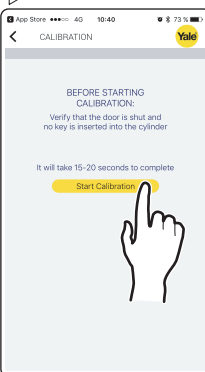
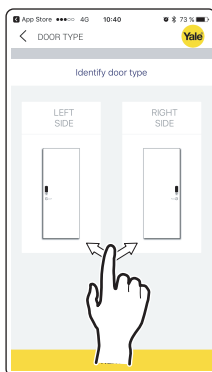
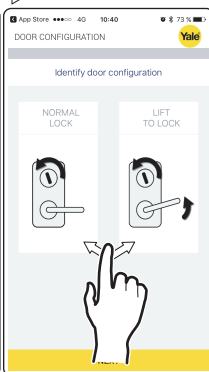
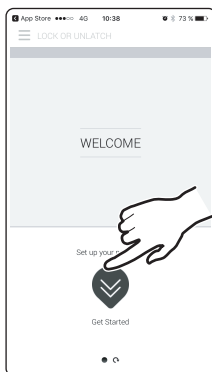


App setup

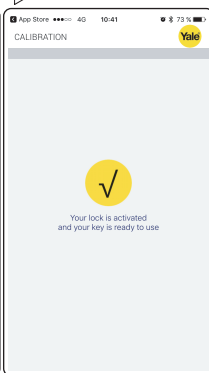
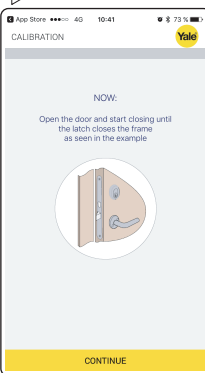
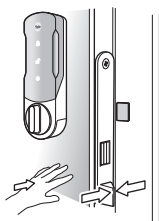
Close the door.
IMPORTANT!
Make sure you are
inside your apartment.



Follow setup instructions
in App

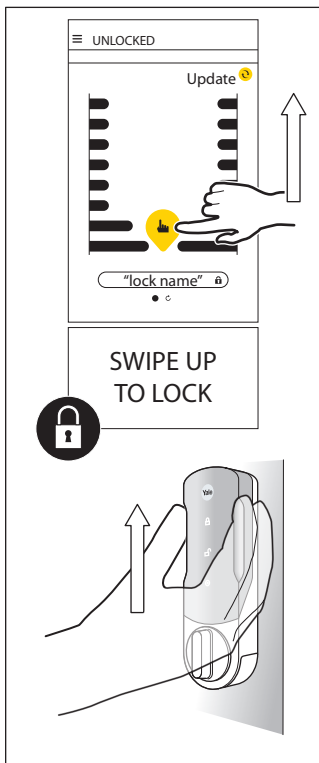
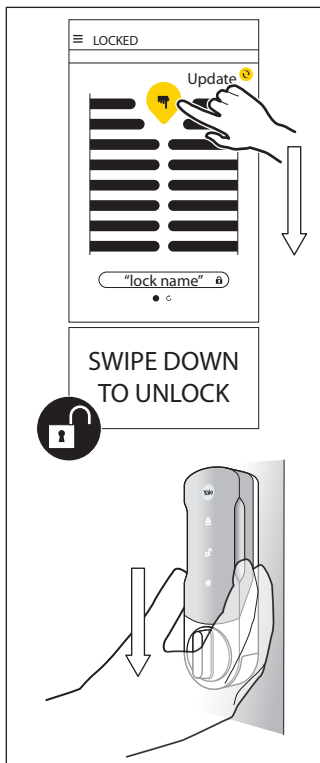


**REST DOOR AGAINST
LATCH DURING SETUP**
“Do not shut the door”



Lock operations

Unlock and lock



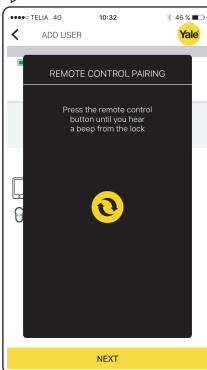
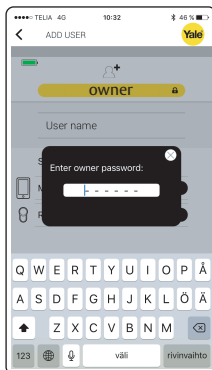
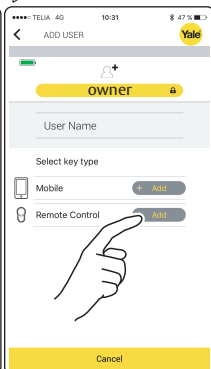
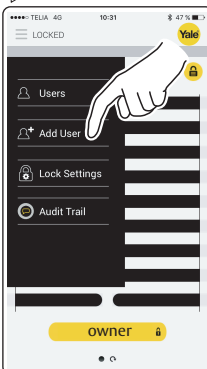
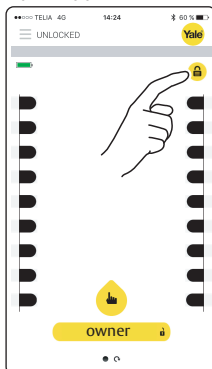
Fob remote setup



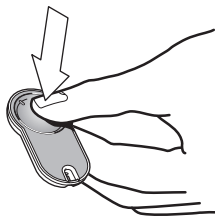
Follow setup instructions in App
NOTE!
Only administrator can add accessories.



Open App

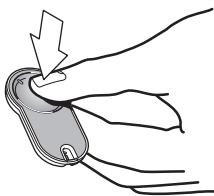


Click several times
continuously,
until connected.

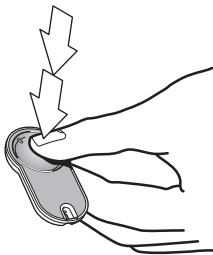


! Remote can not operate lock at the same time as App on Smartphone !

To UNLOCK

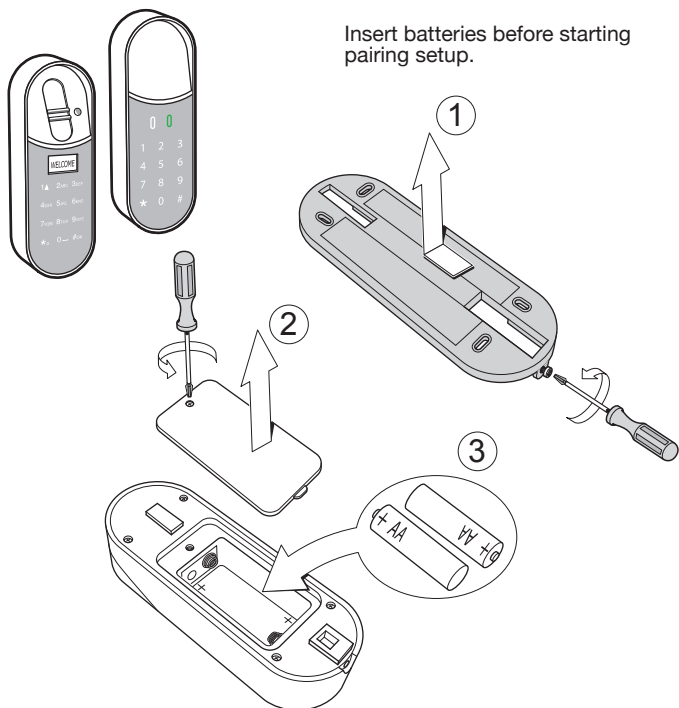


To LOCK

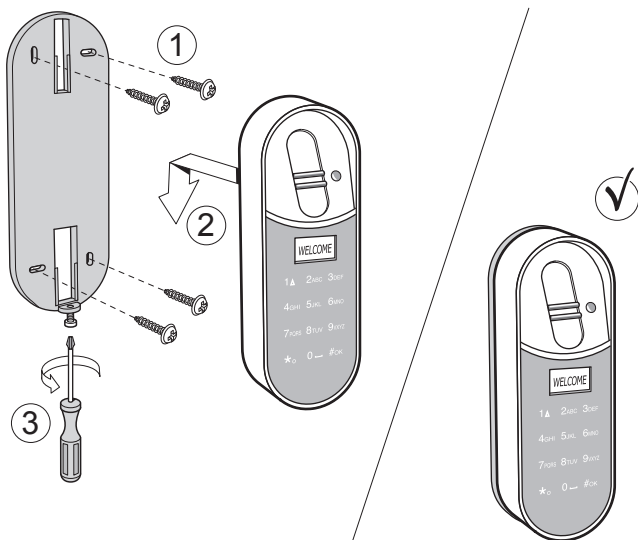


Fingerprint reader/Keypad battery insertion and wall mounting

IMPORTANT !
Keep your door open whilst installing and configuring accessories.



! Do not mount to the wall until pairing setup is complete. !

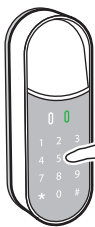


Keypad setup - pairing



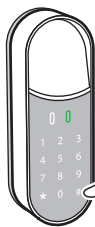
Start by opening the app to ensure that the setup procedure does not timeout!

1



Tap keys to turn **ON**

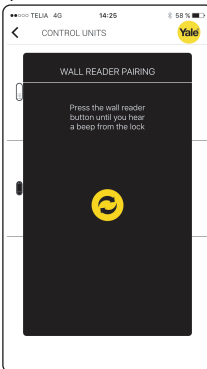
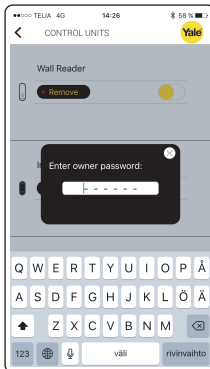
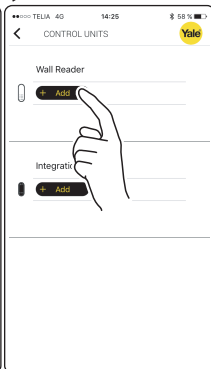
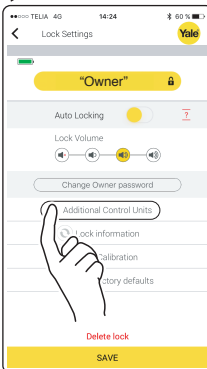
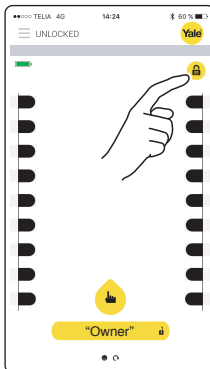
2



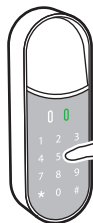
Hold **#** for **5 sec.** to connect first time.

3

Unlock door

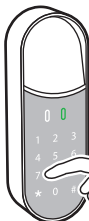


4



Tap keys to light up

5



Click **77 #** to start pairing

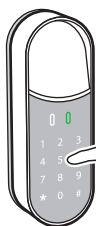
After succesful pairing you will hear a beep.

Mastercode setup for your Keypad

Next page

Keypad Master code setup

1



Tap keys
to turn **ON**

2



Click
11 #
to start
setup

3

Input a **Master code** 4 to 10 digits, then press **#**

--	--	--	--	--	--	--	--	--	--

4

Repeat **Master code**, then press **#**

5

Your Master code can now be used to unlock the ENTR S
 -- **UNLOCKING** is done by using the **Master code** (4-10 digits)
 then press **#**
 -- **LOCKING** is done by pressing **1 #**
 -- *User codes* can be created and shared.
 They can Unlock but have no access to setup functions.

! Keypad can not operate lock at the same time as App on Smartphone !

For complete, detailed manuals please visit: www.yale.se/entrs
www.yale.no/entrs
www.yale.dk/entrs

6

Creating User code.

-- Up to 20 USER CODES can be created and shared.

1. Wake up the product by touching the keypad
2. Press **# MASTER CODE #**
3. Press **11 #**
4. Enter New PIN/CODE (4-10 digits) --> **#**
5. Repeat New PIN --> **#**
- 6.2 beeps = success!

X

To RESET MASTER CODE:

-- Click *** MASTER CODE #** then **99 #** then **MASTER CODE #**

Keypad is now RESET and can be paired to any ENTR S

Fingerprint reader setup - pairing



Start by opening the app to ensure that the setup procedure does not timeout!

1



Tap keys to turn **ON**

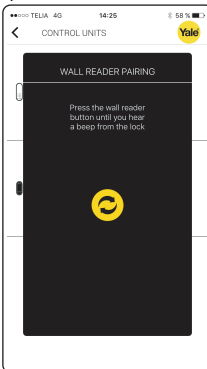
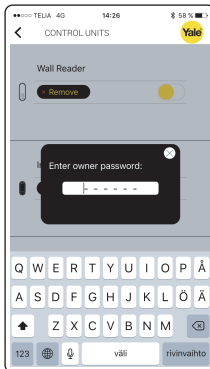
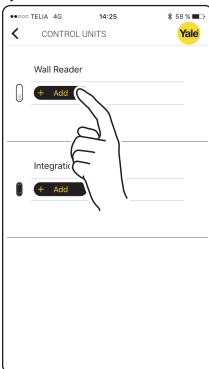
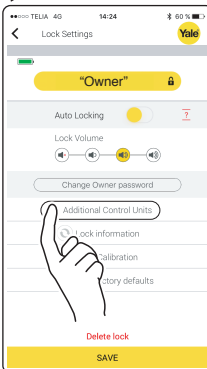
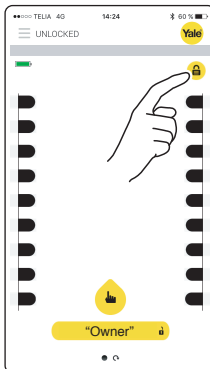
2



Hold # for **5 sec.** to connect first time.

3

Unlock door

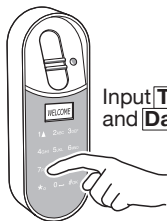


4



Tap keys to light up

5



Input **Time** and **Date**

After successful pairing you will hear a beep.

Mastercode and fingerprint setup for your Keypad

Next page

1



Tap keys
to turn **ON**

2



Click
11 > #
to start
setup

PAIR LOCK?

*-NO OK-YES

3

Enter a **MASTERNAME** and after that a
MASTER CODE 4 to 10 digits, then press **#**

--	--	--	--	--	--	--	--	--	--

4

Repeat **Master code**, then press **#**

Follow on screen guide for setting up fingerprints.



Finger 1
- Swipe several times in
different angles until
the unit beeps twice.



Finger 2
- Swipe several times in
different angles until
the unit beeps twice.

5

Your **Master code** can now be used to unlock the ENTR S
You can add **USER CODES** and new users via the menu.

-Wake up the unit

-Enter *** Master code #**

-Choose **"USERS --> ADD USERS -->** Follow the instructions

-- **UNLOCKING** is done by using the **USER CODE** or
MASTER CODE (4-10 digits then press **#**) or by **FINGERPRINT**

-- **LOCKING** is done by pressing **1 #**

-- **Up to 20 USER CODES/FINGERPRINTS** can be created
and shared. They can Unlock but have no access to setup
functions.

! Keypad can not operate lock at the same time as App on Smartphone !

For complete, detailed manuals please visit: www.yale.se/entrs
www.yale.no/entrs
www.yale.dk/entrs

X

To **RESET MASTER CODE**:

-- Click *** MASTER CODE #** then **99 #** then **MASTER CODE #**

Keypad is now RESET and can be paired to any ENTR S

Limited Warranty

If your ENTR S ("Product") ceases to function as a result of material or manufacturing defects on the product, the product is subject to product warranty - provided you have purchased the product within the last 24 months. There can be local extensions of the warranty period depending on the type of the defect and the country of purchase.

In case of defect product, contact always in first hand the place of purchase to file a complaint. We recommend to do this within 2 months from the date you have detected the fault.

The terms of warranty that apply to your product are:

- That the product is properly installed and maintained, in accordance with Yale Installation Instructions that you received at the time of purchase.
- That the product has not been modified in any way.
- Warranty does not apply to mechanical failure caused by wear, tear or negligence.
- The warranty does not apply to surface treatment of your Yale product.

The product warranty covers the product and is replaced after a valid complaint of a replacement product or new product. Yale (ASSA AB, Tröving AS, RUKO) AS can not be held liable for any other losses caused by the failure of your product - whether such losses are direct or indirect consequential damages.

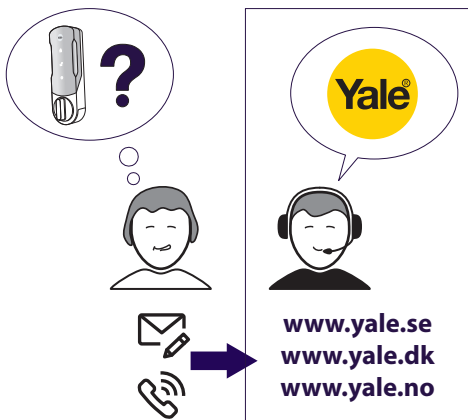
This warranty applies only when installed in domestic homes in Sweden, Denmark, Norway or Iceland and can not be transferred.

Kindly see your local web-pages for warranty details:
www.yale.se/entrs, www.yale.no, www.yale.dk



Support

i



Extended functions manual

www.yale.se/entrs 

www.yale.no/entrs 

www.yale.dk/entrs 



THE YALE BRAND, with its unparalleled global reach and range of products, reassures more people in more countries than any other consumer locking solution.

THE ASSA ABLOY GROUP is the world's leading manufacturer and supplier of locking solutions, dedicated to satisfying end-user needs for security, safety and convenience.